

ErGo Pro 360 Case for Zebra ET401 Tablets

ET401 8" with Scanner

PART NUMBER: FM-SNP-ET40X8
MSRP: \$59.99

ET401 10" with Scanner

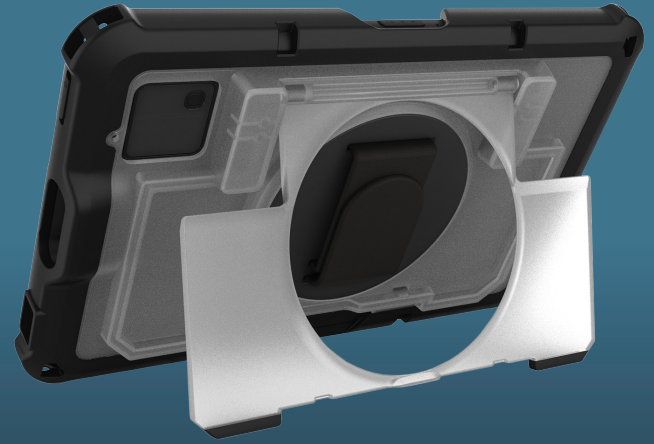
PART NUMBER: FM-SNP-ET40X10
MSRP: \$69.99

ET401 8", no Scanner

PART NUMBER: FM-SNP-ET40X8-NS
MSRP: \$59.99

ET401 10", no Scanner

PART NUMBER: FM-SNP-ET40X10-NS
MSRP: \$69.99



Rugged Protection and Enhanced Mobility

The **ErGo Pro 360 Case for Zebra ET401 8-inch** is designed for professionals who demand the ultimate in versatility and performance. Combining the best of both worlds, this rugged yet lightweight case features an integrated 360-degree rotating hand strap and a friction-hinged easel stand—giving you the freedom to work hands-on or hands-free, wherever the job takes you.

Key Features

- Exceeds MIL-STD-810H (military standard) drop testing by SGS at 5 ft
- Built-in adjustable hand strap rotates a full 360-degrees for enhanced grip and seamless transition between any orientation
- Built-in friction-hinged easel stand for adjustable viewing angles
- Precision-fit design with cut-out for built-in device scanner functionality (scanner models only)
- Compatible with Zebra Work Station Connect Cradle and Charging Station
- Drop and shock protection with reinforced corners
- Corner retention slots facilitate additional solutions
- Lightweight design reduces bulk
- Clear polycarbonate for visibility of asset tags
- Open access to all I/O ports
- Quick and easy installation



with Scanner



without Scanner

